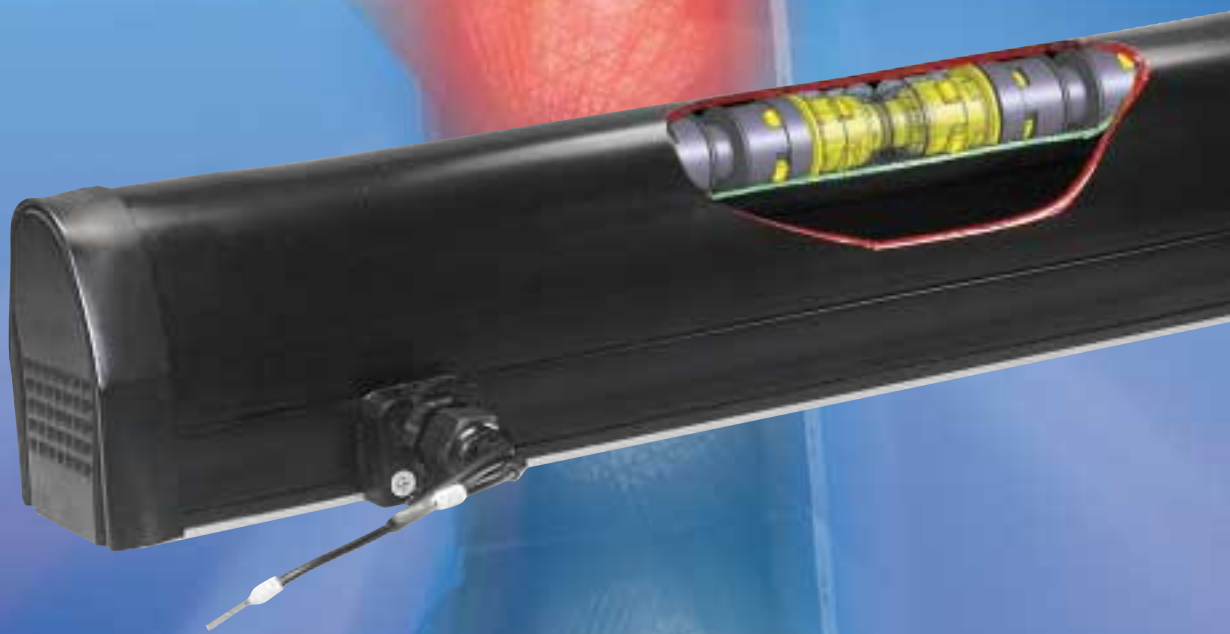


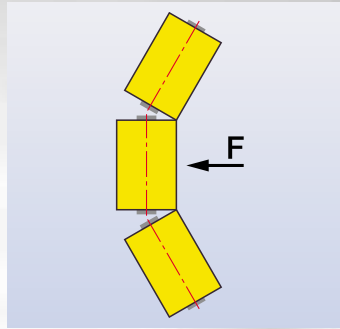
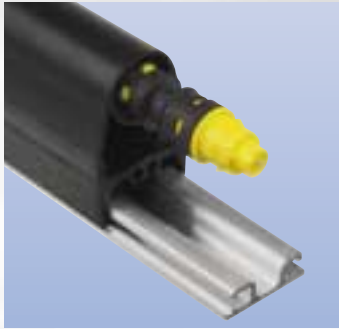
MAYSER[®]
Polymer Electric

Safety Edge SL/NC II with safety contact chain

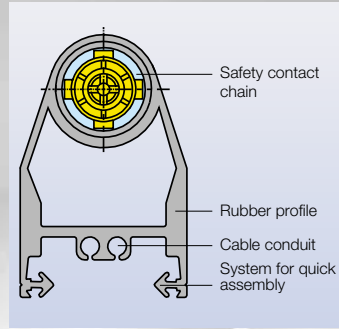


- force-guided break contact
- protection class IP65 (higher level also possible)
- category 3 in accordance with EN 954

Safety Edge SL/NC II with safety contact chain



Force-guided break contact



Closed switching chamber

Safety Edges are used in many different areas of application. They come into operation anywhere considerable danger can arise from nipping and trapping points on automated equipment. The Safety Edge SL/NC II with safety contact chain from Mayser is an integrated systems solution that does not require control units specific to a particular type of Safety Edge.

How does the Mayser Safety Edge SL/NC II with safety contact chain operate?

The Mayser Safety Edge SL/NC II with safety contact chain has a break contact sensor, a break contact safety contact chain. If the sensor is activated the safety contact chain causes isolated signal emission to be effected directly,

without having to use a control unit. This is because both Safety Edge break cable ends correspond to the relay outputs of a control unit. The sensor is safely enclosed in a closed switching chamber.

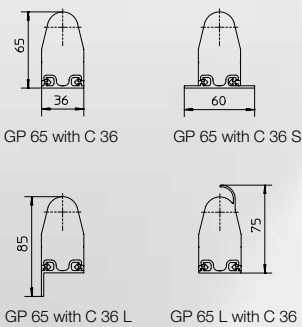
Performance characteristics

- proven system structure
- sure to function break contact sensor
- can be connected direct to machine controls with category 3 as per EN 954
- tested in accordance with EN 1760-2
- quick and easy to mount
- integrated cable conduit
- double isolation rules out cross coupling

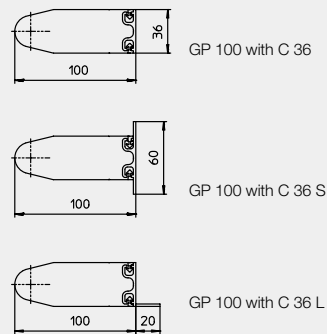
Safety Edge areas of application:

- on all types of doors and gates
- stages
- passenger transportation
- car washes
- sewage plants
- airports

Height 65 mm



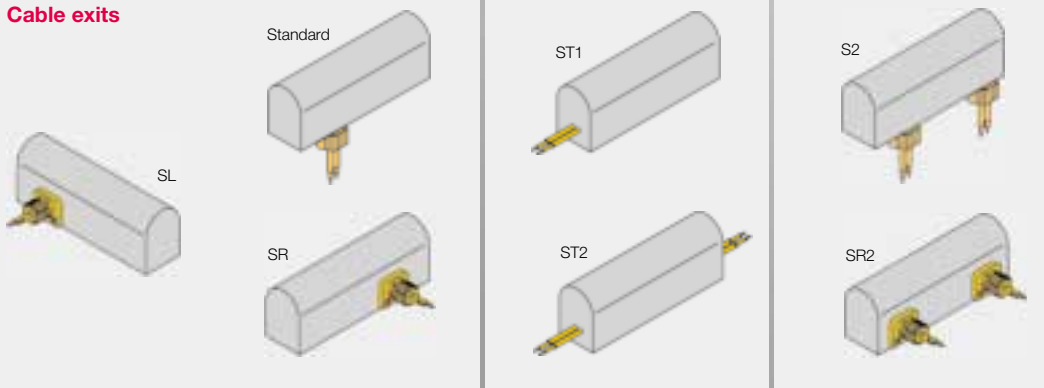
Height 100 mm



Technical Data

Break contact Safety Edge SL/NC II		
type	GP 65	GP 100
sensor	break contact electromechanical safety contact chain	
actuation angle ¹⁾	< 90°	< 90°
actuation force ²⁾	≤ 150 N	≤ 150 N
actuation distance ²⁾	max. 10 mm	max. 10 mm
total deformation distance ³⁾	min. 22 mm	min. 45 mm
applicable standard	EN 954 category 3	
connecting voltage	max. 48 V, max. 0.2 A	
connecting cable	2x 0.5 mm ² , double isolation, cross coupling safe, length 1.5 m	
rubber profile material	EPDM (GP 65 L in NBR)	
al rail material	extruded AlMgSi05	
protection class	IP65 (IP67 on request)	
max. ambient temperature	-15 °C to +60 °C	

Cable exits



¹⁾ re. longitudinal axis
²⁾ re. test piece Ø 80 mm
³⁾ re. test piece Ø 80 mm and 250 N

MAYSER®

Mayser GmbH & Co. KG
 Polymer Electric
 Örlinger Str. 1 - 3
 D-89073 Ulm
 Tel. +49 731 2061-0
 Fax +49 731 2061-222
<http://www.mayser.de>
 E-Mail: pe@mayser.de