

MAYSER®

Polymer Electric

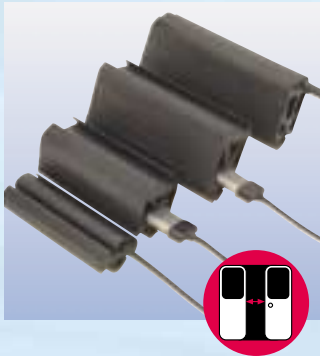
**Improved safety for
your passengers and
your organisation.**



- Prevention of accidents in door area when getting on or off.
- Improved safety when no conductor is present
- Optimal passenger safety

At a glance: Mayser Safety Systems for buses and trains

Mayser finger protection profiles with Safety Element



Application areas:

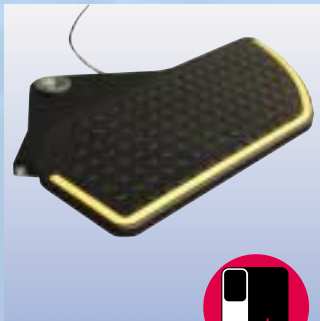
- Closing edge of doors made safe (finger protection profiles) on power operated doors in trains, buses and special-purpose vehicles
- Sensitive edges on sliding steps, ramps and hoisting lifts as well as obstacle detection
- Moving door components made safe to give legroom protection



The advantages

- ☑ Fulfills the requirements of VDV 111 and prEN 14752
- ☑ Door reversal during door closing operation
- ☑ More safety when no conductor is present
- ☑ Maintenance-free system, monitored for function
- ☑ Lower maintenance costs compared with air pressure sensors
- ☑ High availability, independent of variations in temperature
- ☑ Can be retrofitted ... suitable for your vehicles, too

Mayser Safety Steps



Application areas:

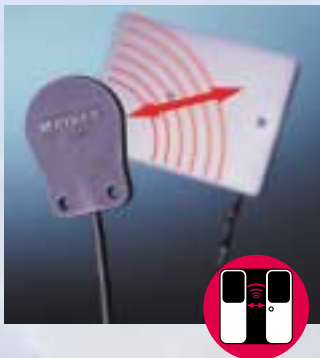
- Fold-away, sliding and swivel steps, ramps and hoisting lifts in trains, buses and special-purpose vehicles made safe
- Door entrances made safe
- Actuation of train compartment sliding doors
- Emitter for passenger counting operations



The advantages

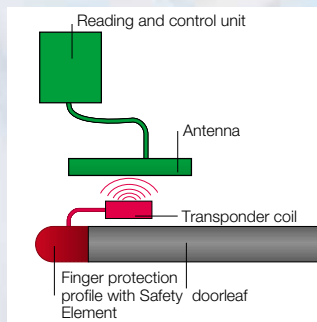
- ☑ Sensitive Step ensures passenger safety
- ☑ Step edges also sensitive
- ☑ Maintenance-free system, monitored for function
- ☑ No adverse effects due to atmospheric exposure
- ☑ High availability, long life
- ☑ Smooth tread action, will not slump
- ☑ Halogen free material
- ☑ Fulfills the requirements of VDV 111 and prEN 14752

Mayser Wireless Safety



Application areas:

- Wireless signal transmission of Safety Edge signals to door controls in trains, buses and other power operated doors



The advantages

- ☑ Wear-free, wireless transponder technology
- ☑ Maintenance-free, self-monitoring system
- ☑ No adverse effects on the system due to dirt
- ☑ Ideal for use in small spaces
- ☑ Power lines to the door leaf not required
- ☑ Complies with IEC 61508 SIL 2
- ☑ Easy to retrofit and quick to install
- ☑ Cables and cable carrier chains no longer required



Finite Element Analysis

The name Mayser stands for safety. Our experience is your benefit:

- Competent advisory service as a result of long-standing know-how in safety systems
- Development of rubber profiles with integrated sensors. Customized finger protection profiles development and optimization using FEA (finite element analysis)
- All the advantages of a medium-sized, versatile company

- Design, configuration and planning of customized, safety-relevant systems, starting with the Safety Element and the finger protection profile right down to signal evaluation

MAYSER®

Mayser GmbH & Co. KG
 Polymer Electric
 Örlinger Str. 1-3
 89073 Ulm
 Germany
 Tel. +49 731 2061-0
 Fax +49 731 2061-222
<http://www.mayser.com>
 E-mail: pe@mayser.com